

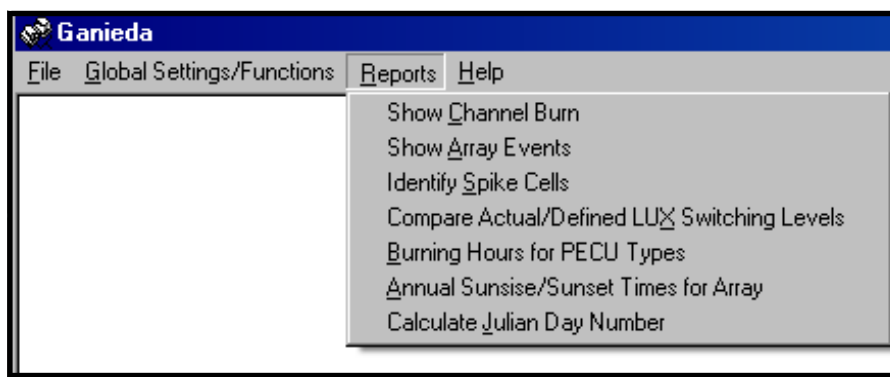
Ganieda

Ganieda gives the Street Lighting Engineer easy access to the mystical data held within the PECU arrays!

Ganieda is a standard Windows application that downloads the data held in the PECU Array which your Meter Administrator uses to calculate your consumption figures.

Not only does Ganieda give you a method of checking your charges, but it also gives you an invaluable tool for monitoring cell performance!

Taking the charges issue first. Ganieda downloads exactly the same cell data as your Meter Administrator. Through a standard built in report, Ganieda enables you to calculate how long each cell in the array has been burning over a period of time which you decide (for example last month) and relate it to your last summary information, giving you a reasonably close calculation of the energy charge for that item. Ganieda also calculates the sunset and sunrise times for every day as well as the dark hour per day, enabling you to determine the energy charge for all your dawn to dusk type cells. Add this to your continuous items, and the fact that Ganieda contains the list of standard wattage codes from Elexon, and you can calculate (to within an acceptable tolerance) your complete energy charge! Once Ganieda has downloaded a whole year's cell data, you can then accurately project this for the forthcoming year to show an expected annual energy charge. This



then gives you a better indication of how much of your energy budget is required for the charges, and how much can be spent elsewhere!

It is more than that though! By providing you with accurate

cell switching data you can monitor individual cell performance. This has a dual effect. In one, you can identify cells in the Array which are not performing properly and have them changed, thus reducing your energy bill. In the other it enables you to compare cell types directly, and decide which ones suit your circumstances best, rather than rely on manufacturers data.

Ganieda can also manage multiple Arrays. If you are in the fortuitous position of owning your own Array, as well and the one your Meter Administrator uses, you can use it as a test bed for new cells before using them for real on the ground!

Ganieda also provides all the cell data in an Access database to enable you to write your own additional reports as required, and is available via ODBC, making insertion into spreadsheets child's play.



ICTIS Ganieda

PECU ID: 1405

Description	CH	Event Date	Event Time	LUX/CODE	Event Type
70/210	1	19/05/2005	04:07:28	186	PECU off
70/210	1	19/05/2005	20:15:33	81	PECU on
70/210	2	19/05/2005	04:13:19	351	PECU off
70/210	2	19/05/2005	20:11:19	151	PECU on
70/210	3	19/05/2005	03:41:50	26	PECU off
70/210	3	19/05/2005	20:22:12	31	PECU on
70/210	4	19/05/2005	03:43:29	33	PECU off
70/210	4	19/05/2005	20:20:15	42	PECU on
70/210	5	19/05/2005	03:44:00	35	PECU off
70/210	5	19/05/2005	20:19:49	44	PECU on
70/210	6	19/05/2005	03:39:13	18	PECU off
70/210	6	19/05/2005	20:21:23	36	PECU on
70/210	7	19/05/2005			

It's not
all just a
list of
numbers
either...

Analysis Date = 16/06/2003

Regime 421 uses PECU Type TC. LUX ON = 70, Actual = 242
Regime 421 uses PECU Type TC. LUX OFF = 70, Actual = 256
Regime 821 uses PECU Type EA. LUX ON = 70, Actual = 305
Regime 821 uses PECU Type EA. LUX OFF = 70, Actual = 252

Light meter may need recalibrating

Standard Deviation for this day calculated as 79.303
Mean Lux Level = 275.706
Tolerance Limits are 196.403 < LUX < 355.009

Channel: 2: LUX: 179 is out of tolerance
Channel: 10: LUX: 179 is out of tolerance
Channel: 11: LUX: 365 is out of tolerance
Channel: 18: LUX: 404 is out of tolerance
Channel: 21: LUX: 496 is out of tolerance
Channel: 24: LUX: 382 is out of tolerance
Channel: 27: LUX: 371 is out of tolerance

..Ganieda actually
reports in English!

All ICTIS applications include an option for membership of the support scheme. This provides members with unlimited telephone and email support, as well as all future upgrades. Members of the scheme may suggest enhancements to the program at any time; resultant new versions are then released to all scheme members free of charge. Further details on request.

ICTIS

Tel: 08707 57 67 32

Fax: 08707 57 67 35

Email: info@ictis.net

www.ictis.net